

Salt Spring Island Transportation and Transit Function

Regional District Chairs and CAOs Meeting
March 19, 2013

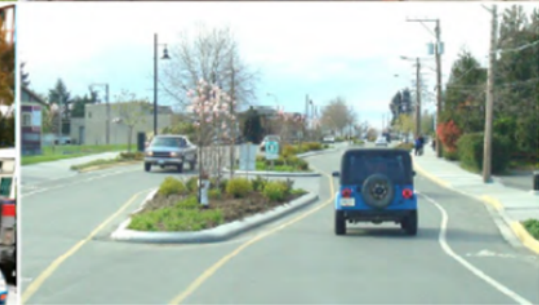
Presented by Bob Lapham, CAO
Capital Regional District

The Capital Regional District on Salt Spring Island

- Salt Spring Island is one of 3 electoral areas within the CRD, along with 13 municipalities
- CRD population is 360,000, of which SSI comprises approx. 10,000 persons in 4,320 households (2011)
- CRD delivers 22 regional & local services within the electoral area, excluding land use planning by the Islands Trust
- Total assessed value for local taxation is \$2.9 billion (2011)
- Transit operating \$280,710 (tax requisition \$71,750 (0.26 per \$1000)
Transportation \$146,250 (tax requisition 0.14 per \$1000)
- 2012 capital project \$1.2M Ganges Road Safety, sidewalk and cycling lane project

Regional Transportation Plan Priorities


- Integrating land-use and transportation policies – addressing growth
- Alternatives to driving alone – transit, active modes
- Managing the system effectively for inter-municipal movement of people, goods & services
- Prioritizing and managing transportation investments strategically



The Regional Transportation Plan Integrates Previous Studies



Making a difference...together



CRD CAPITAL REGIONAL DISTRICT

TravelChoices

A Long-Term Transportation Strategy for the Capital Region

The Capital Regional District
Transportation Corridor Plan
Final Report
September 2010



Halcrow Consult

Transit Future Plan

VICTORIA REGION | May 2011



Ministry of Transportation
Highway 17 Corridor Planning Strategy

Capital Regional District Regional Pedestrian & Cycling Masterplan




This report is prepared for the sole use of the Ministry of Transportation. No representation of any kind is made by Urban Systems Ltd. or its employees to any other party where Urban Systems Ltd. does not have a contract.
1961.0189.02 / March 15, 2007

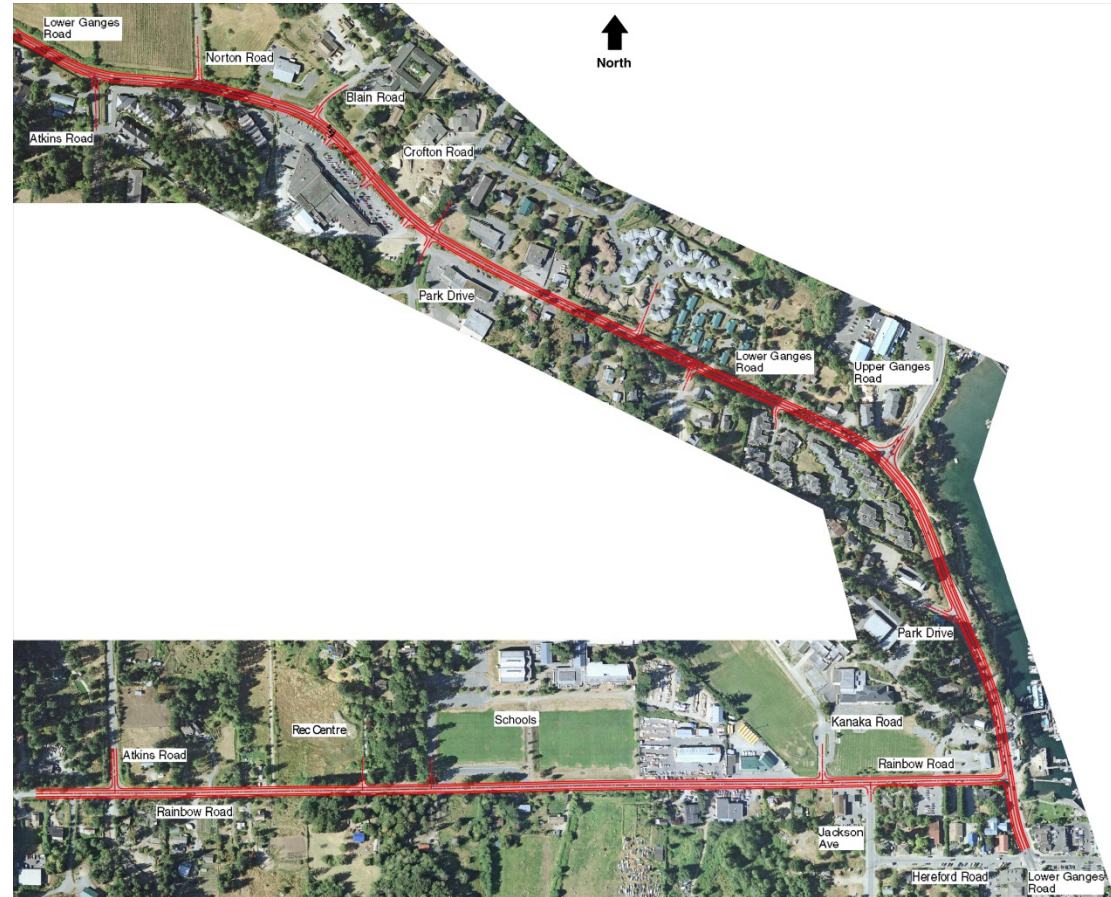
Implementation on Salt Spring Island



Making a difference...together

- CRD requested expanded authority from the Province for transit and transportation service
 - Alternative approval process for consent of electorate prior, support by MOTI and Transit, consent of the Province
 - Service adopted July 11, 2007 operating since January 2008 with Advisory Commission Bylaw adopted August 2008
 - Funding for each local service remains separate with limits in each bylaw and using Community Works Gas Tax funds to leverage transportation investments
 - Master License of Occupation Agreement between MOTI and CRD for construction of works within road right of way
 - Capital Plan anticipates funding shared between local taxes, electoral area share of Federal Gas Tax and MOTI plus others
- 

North Ganges Project Location



More Information

www.crd.bc.ca/saltspring/transportation

